

TIPS

- If you get any KlayResin on the outside of the bezel, take it off as soon as you can. A little bit of acetone on a cotton bud works well for cleaning up any KlayResin on the metal but be careful not to let any get on your image!
- Wear latex gloves if you have sensitive skin when mixing the KlayResin and remove any rings you have on too, to save them getting any residue on them.
- The warmer the temperature the quicker the KlayResin sets.
- Use laser printed images of your children or family members – they make great presents too!
- Remember to reverse any writing when you photocopy it so it transfers on the correct way.



You can use the same technique to make rings too!

... LOVED THIS KIT?
THEN TRY OUR

WINE
CHARMS KIT FIND US AT

P (09) 479 9129
WWW.ARTCLAYNZ.CO.NZ

ARTCLAY NZ LTD

MAKING : CREATING : EDUCATING



BEZEL
BRACELET
USING IMAGE TRANSFER

TO MAKE YOUR BEZEL BRACELET, YOU WILL NEED:

- 6 or 7 Antique Bronze or Silver bezels with two loops (depending on the size of your wrist)
- 10 jump rings
- A chain tag and lobster clasp
- White KlayResin

Laser Printed images or designs (the designs in the Bezel Bracelet Kit have already been laser printed for your convenience).

10 EASY STEPS TO FOLLOW:



STEP ONE: Cut out all of your images for each of the bezels. It is best if you cut them out slightly larger than what you need.



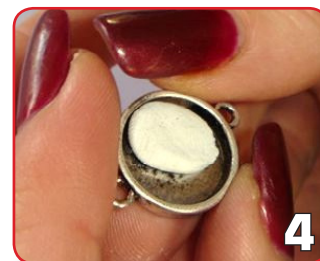
STEP TWO: Using a blade, cut off a very small amount of KlayResin. Enough to fill one bezel. If you cut off more than you need you will not have time to place it in the other bezels before it starts to set, so it will be wasted. Tip: Cut the KlayResin out on baking paper so it doesn't stick to your surface.



STEP THREE: Mix well with your fingers, blending the inner and outer core until the colour is even. Work quickly as the KlayResin will start to set within a few minutes.

STEP FOUR: Press the KlayResin in to the bezel, pushing it in to the sides. The KlayResin will adhere to the bezel without gluing.

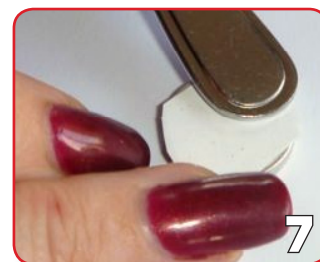
STEP FIVE: Even out the KlayResin so it is no higher than the top of the bezel, by patting it down. If it is higher than the top of the bezel, take some



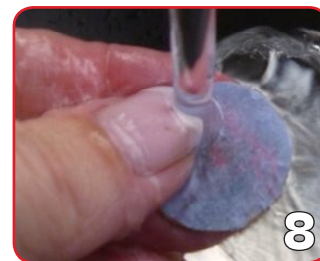
of the KlayResin out and then pat down with your finger to smooth it out again.



STEP SIX: Centre the image and place it face down on top of the KlayResin. Press down with your finger. The time taken from blending the KlayResin to placing the image on it should be less than a minute.



STEP SEVEN: Use the back of a teaspoon or the back of your fingernail to burnish or smooth over the image on to the KlayResin. You want to press firmly but not so much as to cause the KlayResin to come out over the top of the bezel. Make sure you rub evenly, all over, including the edges. The KlayResin will start to heat up and then set. This should take approximately 10 minutes.



STEP EIGHT: Once the KlayResin feels hard, soak the bezel in a cup of tepid water or leave it under gently running water until the paper has absorbed the water and it starts to look transparent.



STEP NINE: Remove the paper by gently rubbing in a circular motion with your fingers until all the paper has come away. Allow to dry. To get a matt shine, you can buff it by rubbing it on your jeans or use the Glaze Sealer included with the kit for a no bake, glossy finish. To use the Glaze Sealer, brush on a thin coating with a clean brush and leave to dry for 30 minutes.

STEP TEN: Connect a jump ring to each bezel to join together and then use another jump ring to attach the lobster clasp and chain tag to complete your bracelet.